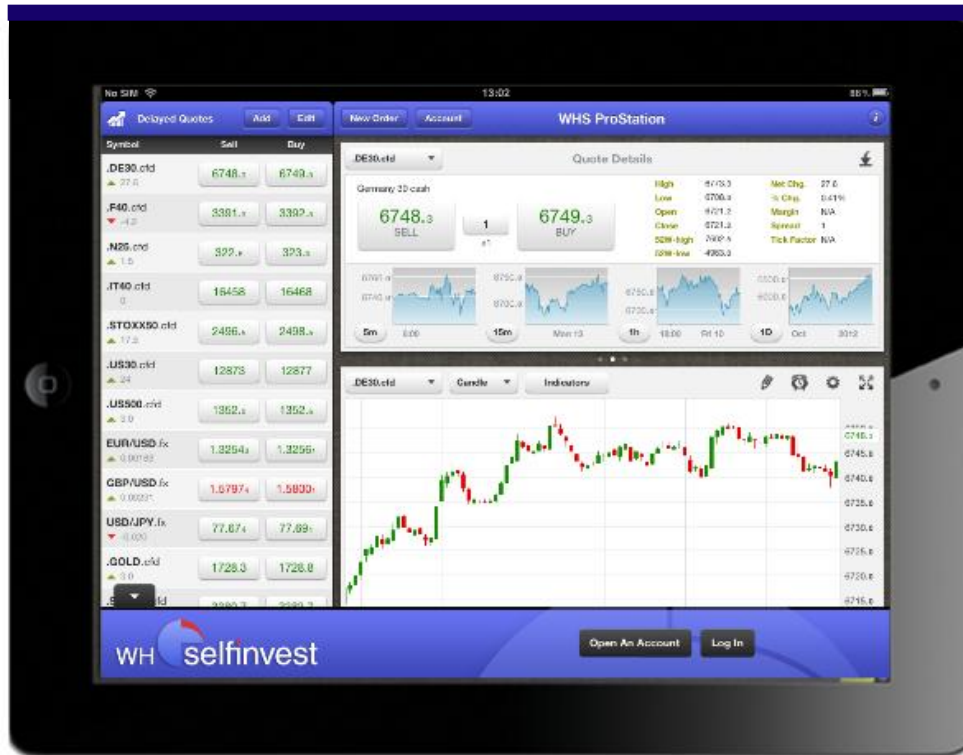


## WHProStation iPad app



Take your WHProStation anywhere you want.

Full-screen charting, positions, orders and alarms displayed.

Over 30 different indicators and TA-features available.

Discover everything WHProStation iPad app has to offer.



**WH SELFINVEST**  
**Est. 1998**  
**Luxemburg, France, Belgium,**  
**Poland, Germany, Netherlands**

Copyright 2007-2011: all rights attached to this guide are the sole property of WH SelfInvest S.A. Reproduction and/or transmission of this guide by whatever means is not allowed without the explicit permission of WH SelfInvest. Disclaimer: this guide is purely informational in nature and can in no way be construed as a suggestion or proposal to invest in the financial instruments mentioned. Persons who do decide to invest in these financial instruments acknowledge they do so solely based on their own decision and risks. All information contained in this guide comes from sources considered reliable. The accuracy of the information, however, is not guaranteed.

**Global overview**

**Symbol search and selection**

**Charts**

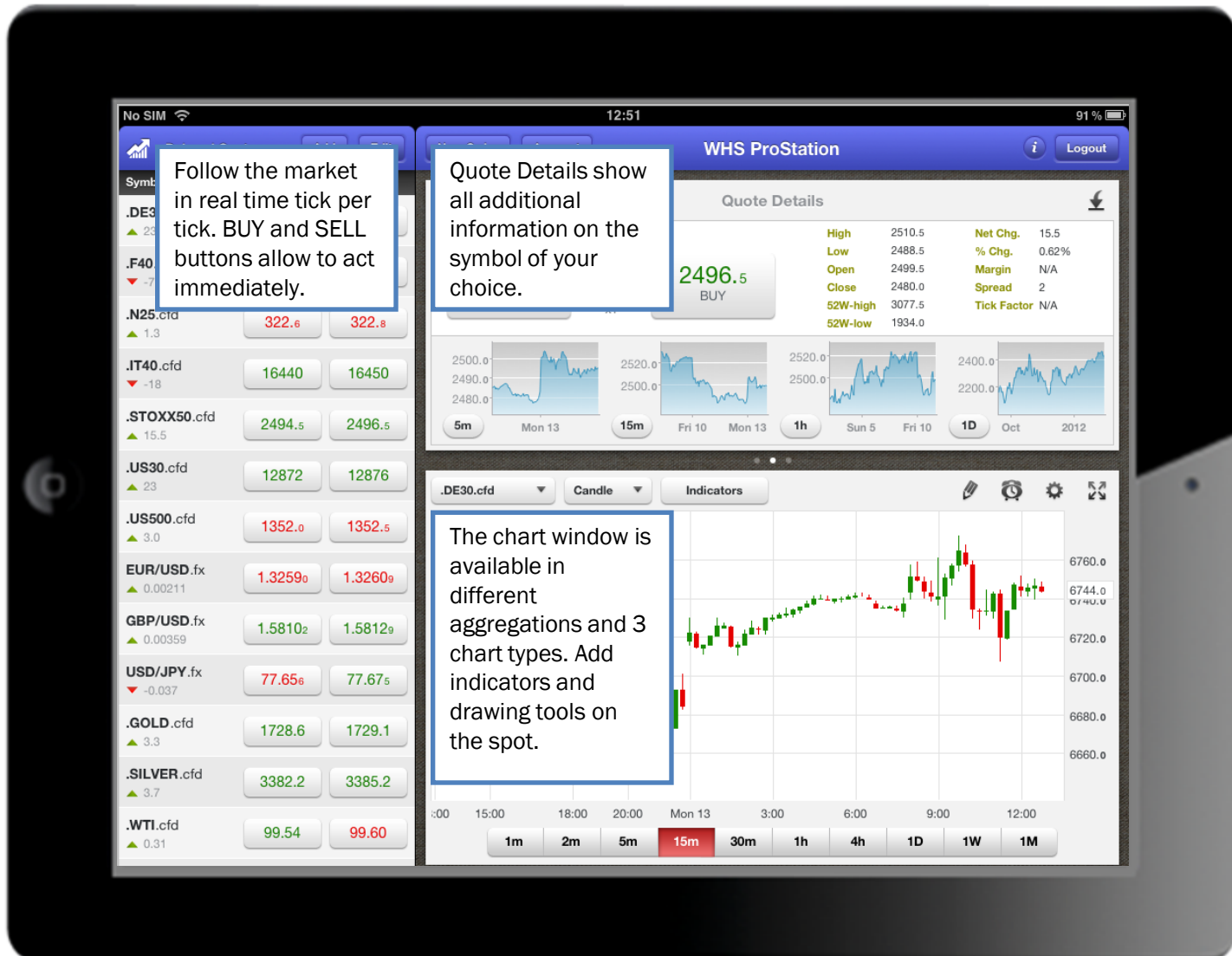
**Technical analysis**

**Orders**

**Alarms**

**Support**







# Global overview

Browse through the different quoteboard visualizations.

The background tablet displays the 'Quote Details' for .US30.cfd (US Wall Street 30 cash) with a price of 12899. The foreground devices show various market data visualizations:

- Left Smartphone (Quoteboard):** Lists various indices and commodities with their current 'Sell' and 'Buy' prices.
 

Symbol	Sell	Buy
.DE30.cfd	6741.8	6742.8
.F40.cfd	3387.3	3388.3
.N25.cfd	322.6	322.8
.IT40.cfd	16448	16458
.STOXX50.cfd	2493.5	2495.5
.US30.cfd	12869	12873
.US500.cfd	1351.5	1352.0
EUR/USD.fx	1.32548	1.32566
GBP/USD.fx	1.58046	1.58074
USD/JPY.fx	77.661	77.678
.GOLD.cfd	1728.4	1728.9
.SILVER.cfd	3380.5	3383.5
.WTI.cfd	99.52	99.58
- Middle Smartphone (Chart & Quote):** Shows a 15-minute candlestick chart for .DE30.cfd. Below the chart is a quote table:
 

Symbol	Sell	Buy
.DE30.cfd	6739.3	6740.3
.F40.cfd	3386.8	3387.8
.N25.cfd	322.6	322.8
.IT40.cfd	16448	16458
.STOXX50.cfd	2492.5	2494.5
.US30.cfd	12869	12873
.US500.cfd	1351.7	1352.2
EUR/USD.fx	1.32534	1.32553
GBP/USD.fx	1.58020	1.58045
- Right Smartphone (Simplified Quoteboard):** Shows a simplified view with 'Net Change' and 'Order Size' (SELL/BUY buttons).
 

Symbol	Net Change	Order Size
.N25.cfd	322.5	1 BUY
.IT40.cfd	16445	1 BUY
.STOXX50.cfd	2492.5	1 BUY
.US30.cfd	12868	1 BUY
.US500.cfd	1351.7	1 BUY
EUR/USD.fx	1.32530	1 BUY

Open Positions Working Orders (3) Filled Orders Alarms (1)

Symbol	B/S	Size	Price	Type	Status	Expiration
2811448 (EUR)						
.DE30.cfd	BUY	1	6800.0	LMT	WORKING	GTC
.DE30.cfd	SELL	1	6825.0	LMT OCO	CONTINGENT	GTC
.DE30.cfd	SELL	1	6750.0	STP OCO	CONTINGENT	GTC

WHS ProStation Logout

Quote Details

Browse between Quote Details, Account information and LiveNews.

.STOXX50.cfd

Quote Details

EU Stocks 50 cash

2494.5 SELL 1 2496.5 BUY

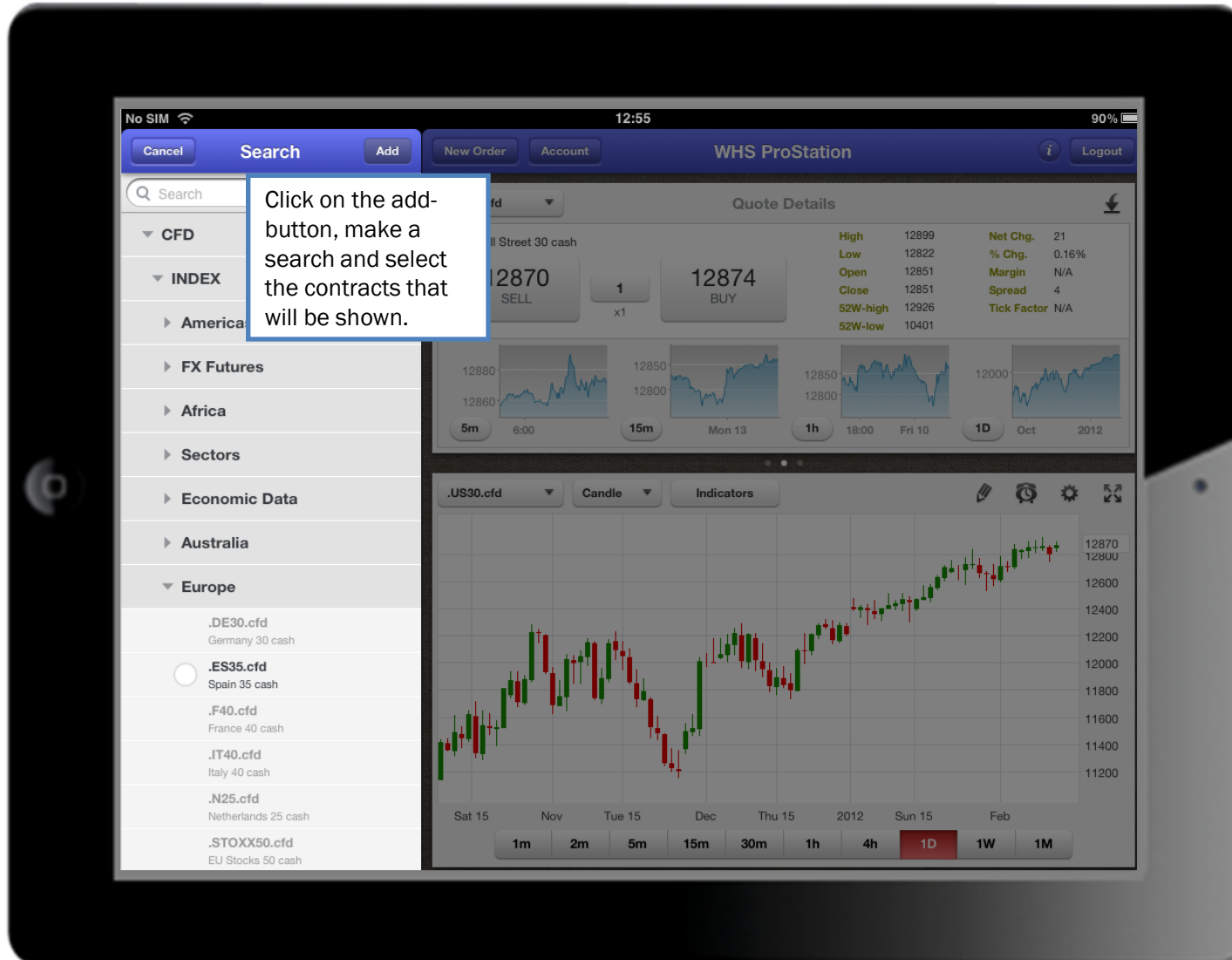
High	2510.5	Net Chg.	15.5
Low	2488.5	% Chg.	0.62%
Open	2499.5	Margin	N/A
Close	2480.0	Spread	2
52W-high	3077.5	Tick Factor	N/A
52W-low	1934.0		

Today's News

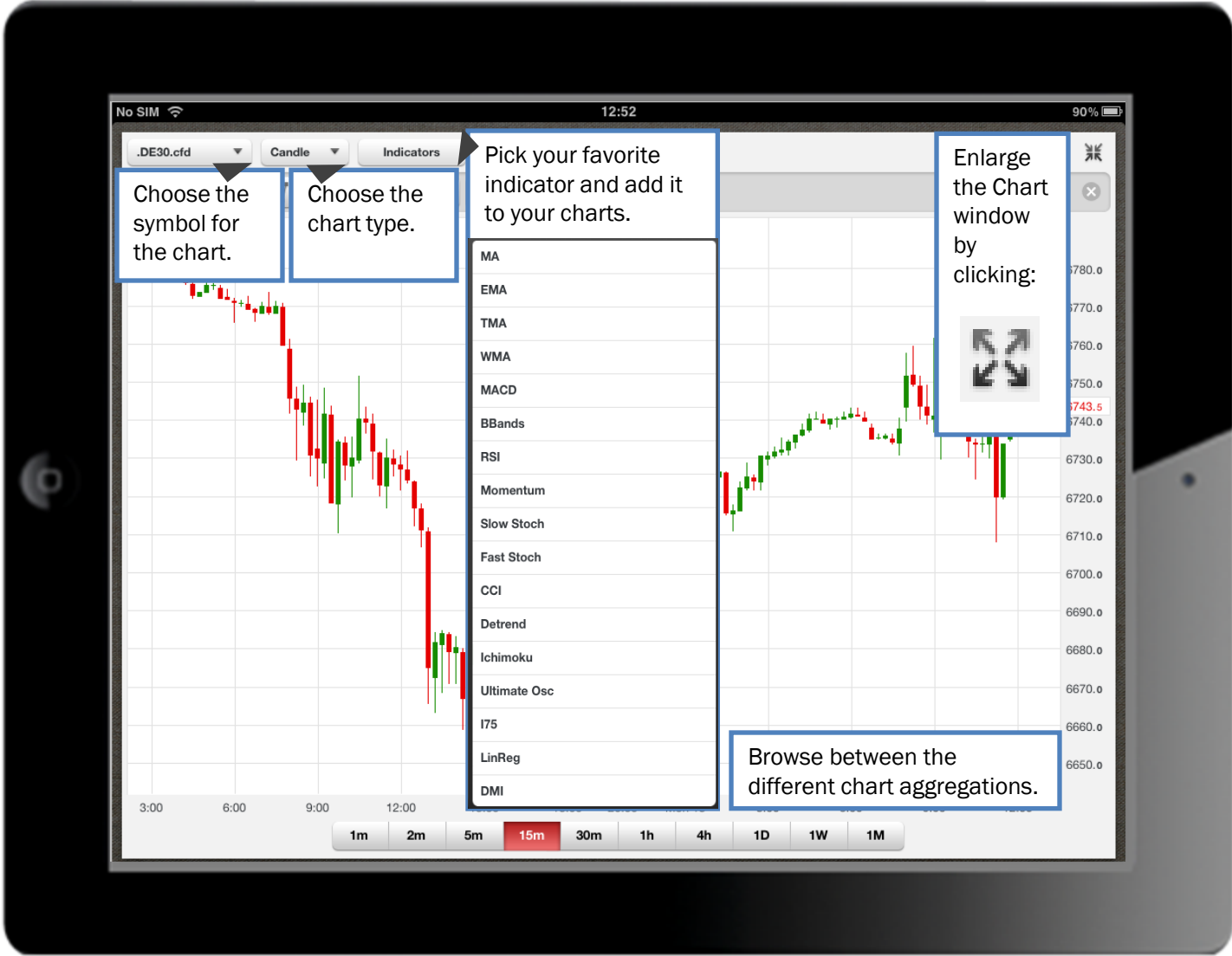
- 13 February 2012 12:49 - 7 minutes ago (IGM)[EU'S REHN] has welcomed the Greek parl vote (to pass the austerity plans) as it is a sign of their...
- 13 February 2012 12:39 - 17 minutes ago (IGM)[EUROPEAN FX MORNING ROUNDUP] There is nothing to come on the North American front so it could be an...
- 13 February 2012 12:29 - 27 minutes ago (IGM)[EMU LATEST] [BANK OF ITALY] is exploring technical problems with the submission of bids at its BOT aucti...
- 13 February 2012 12:29 - 27 minutes ago (IGM)[EUR/SEK] is finding it hard to follow in the footsteps of the sell-off in [EUR/NOK]...
- 13 February 2012 12:19 - 37 minutes ago (IGM)[UK TSY MIN HOBAN] has expressed his disappointment over news that five UK banks that signed up to the...
- 13 February 2012 12:09 - 47 minutes ago

.GOLD.cfd	1728.4	1728.9
.SILVER.cfd	3381.7	3384.7
.WTI.cfd	99.54	99.60





# Charts



Choose the symbol for the chart.

Choose the chart type.

Pick your favorite indicator and add it to your charts.

Enlarge the Chart window by clicking:

Browse between the different chart aggregations.



# Charts



### Settings

**Grid lines**

Horizontal  ON

Vertical  ON

**Show on chart**

Positions  ON

Orders  ON

Alarms  ON

Browse between the different chart aggregations.

Analyze the chart with a variety of drawing tools available.

